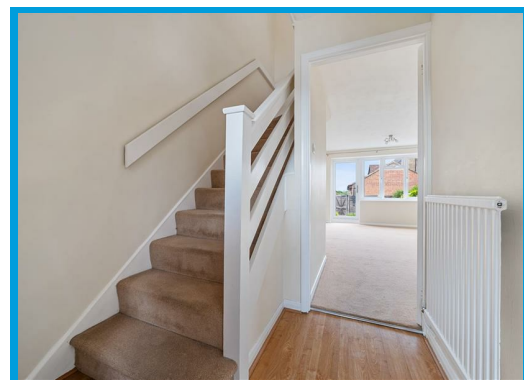
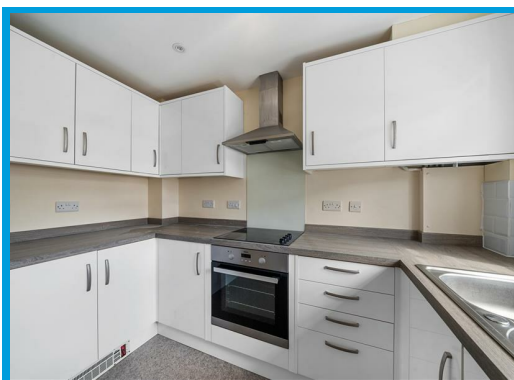




Greenhill Gardens, Merrow Park Guildford, Surrey GU4 7HH

Guide Price £425,000

**\*\*NO ONWARD CHAIN\*\*** Having been recently completely refurbishment throughout, this stunning two double bedroom house is located at the end of a quiet cul de sac within a highly desirable area. Further features include ample on street parking and a garage.



# Description

**\*\*NO CHAIN\*\***

This two double house has recently undergone complete refurbishment and is presented in beautiful order throughout.

The property is accessed through a porch with a meter cupboard and on the ground floor the accommodation comprises an entrance hall leading to a recently fitted, high specification kitchen with built in appliances and a large lounge with built in storage and access to the garden.

On the first floor the property comprises two double bedrooms and a bathroom with shower.

Further features include ample parking, an enclosed garden and a garage in a nearby, easily accessible block.

The property is light and airy throughout and is located within the catchment of top local schools with main bus routes and local shops close by.

